



# GAT MONTHLY MEMBERSHIP PROGRESS REPORT

Results as of: 5/31/2023

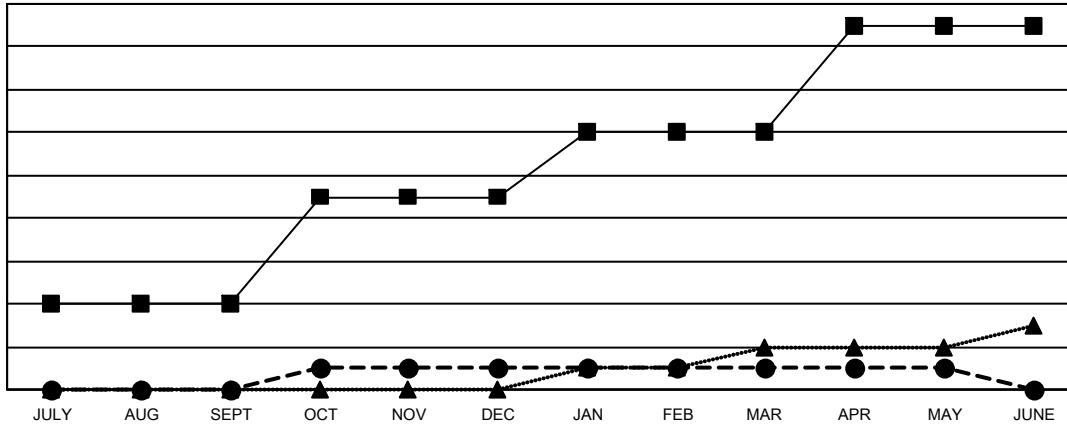
Multiple District 13

LOCATION: OHIO

Clubs			
RESULTS FOR 2022-2023			
QUARTER	NEW CLUB GOAL	NEW CLUBS	DROPPED CLUBS
JULY/AUG/SEPT	4	0	2
OCT/NOV/DEC	5	1	0
JAN/FEB/MAR	3	0	2
APR/MAY/JUNE	5	0	4

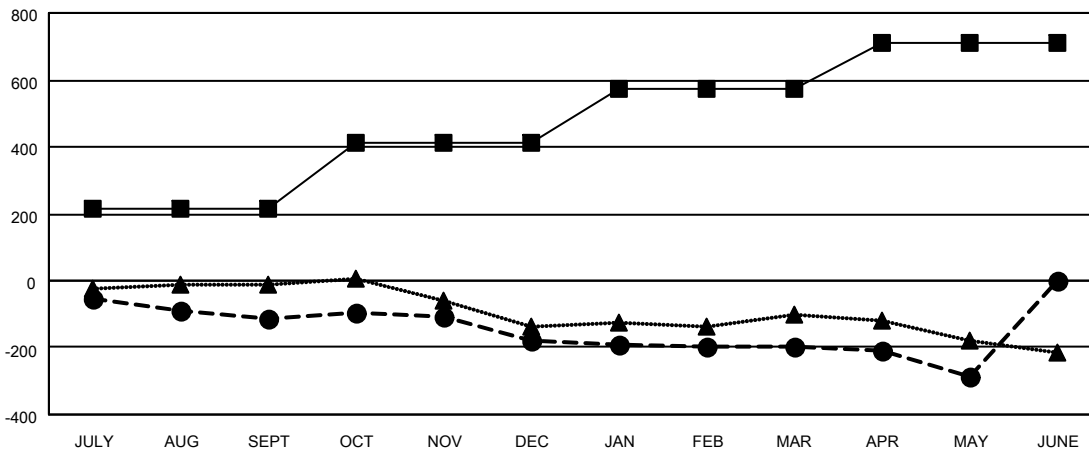
Members			
RESULTS FOR 2022-2023			
QUARTER	MEMBER GROWTH NET GOAL	MEMBER GROWTH ACTUAL	DROPPED MEMBERS ACTUAL (including transfers)
JULY/AUG/SEPT	215	141	240
OCT/NOV/DEC	196	242	293
JAN/FEB/MAR	160	233	216
APR/MAY/JUNE	142	166	237

GOALS AND ACTUAL NEW CLUBS CUMULATIVE



- CURRENT YEAR GOALS FOR NEW CLUBS
- CURRENT YEAR ACTUAL NEW CLUBS
- ▲- LAST YEAR ACTUAL NEW CLUBS

GOALS AND ACTUAL MEMBERS CUMULATIVE



- MEMBER GROWTH NET GOAL
- MEMBER GROWTH ACTUAL
- ▲- LAST YEAR MEMBERSHIP ACTUAL

DROPPED CLUBS: 8	
<b>DROPPED MEMBERS</b>	
DECEASED	176
CLUB CANCELLED	8
OTHER	802
<b>TOTAL</b>	<b>986</b>

205 CLUBS OF 369 ADDED 1 OR MORE NEW MEMBERS

[CLICK HERE FOR CUMULATIVE MEMBERSHIP DATA](#)

GENDER DISTRIBUTION	
MALE	6,736 (68.49%)
FEMALE	3,086 (31.38%)
NON BINARY	0 (0.00%)
PREFER NOT TO ANSWER	13 (0.13%)
<b>TOTAL FAMILY UNIT MEMBERS</b>	<b>2,038</b>
<b>FAMILY MEMBERS PAYING HALF DUES</b>	<b>1,037</b>